

ANNO  1825

GULPENER

De Vrije Brouwer

1825



Wall of Farm



GULPENER



CORPORATE SOCIAL RESPONSIBILITY AMBITIONS 2030

- Regional sourcing is standard
- Sustainable relations
- Fossil free in 2030
- Less pollution every year
- Growth ambition organic beers



Meura Stream Green



- Wort preheater on superheated brewing water
- Wort formation 0,5-1% evap
- Wort stripper 0,5% evap
- Wort cooling very hot water booster

→ Reduction energy consumption 75%



Heating mash tun = Clean Steam + superheated brewing water injection

- Low temperature heating = heat pump
- Reduction of heat pump peak capacity & investment

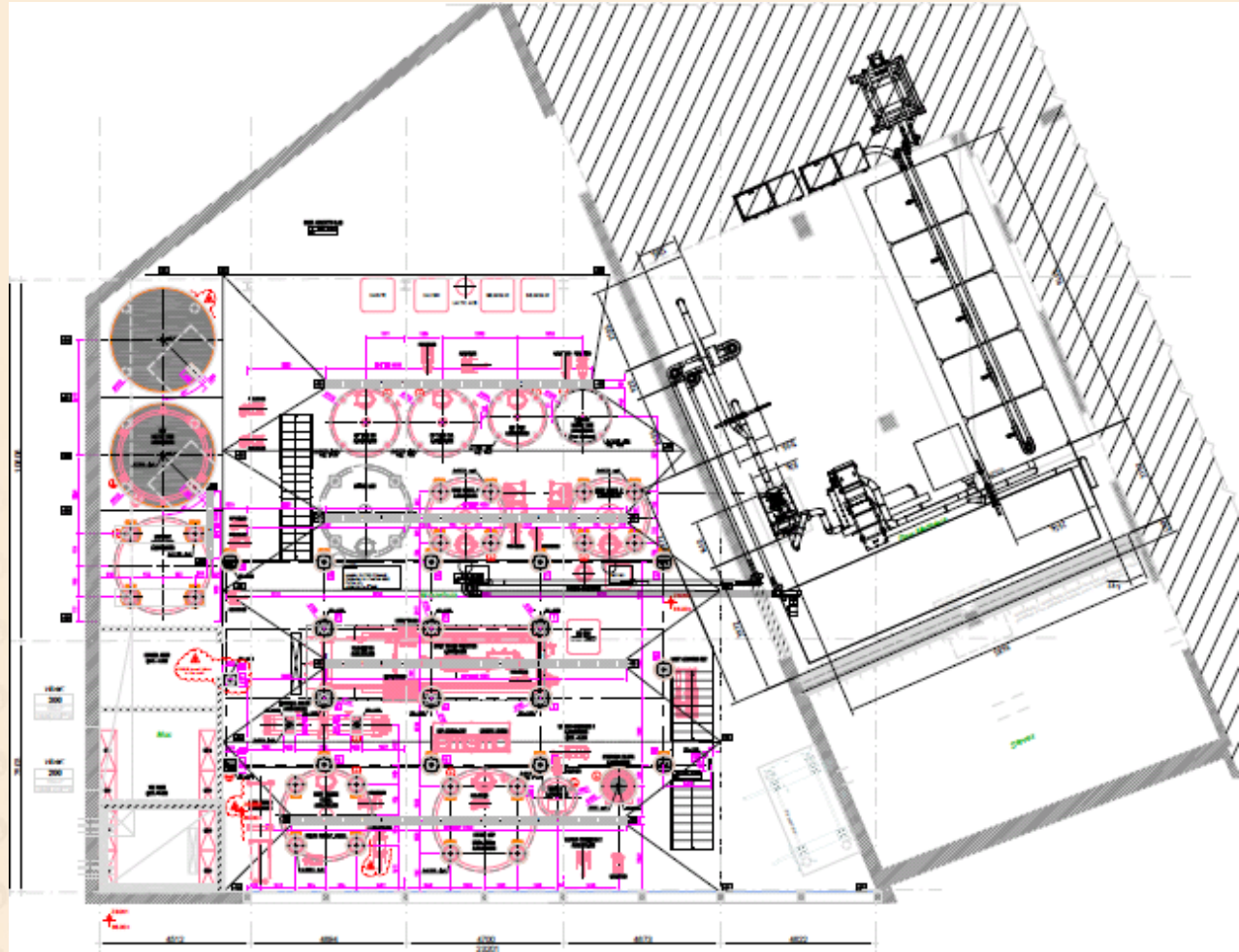
Meura fine grist mash filter

- Year-to-year variability of regional barley malt
- Processing unmalted regional organic alternative cereals



Phase II – heat pump

- Sustainable electric power
- 100% natural refrigerants – no halogens
- Cooling heat output = brewhouse heat input



ANNO GB 1825
GULPENER
De Vrije Brouwer

Sterk Rogge Bier



Boeren Collab

FRUITIG, LICHT PIKANT BIER
VAN LOKALE OERGRANEN



FELIX
HUNTJENS
BIO BOER



MEET TROES VOOR U GEBROUWEN. GEEN 18. GEEN ALCOHOL.

GULPENER



Lessons learned

- Select the right project partners
- Challenge your partners – hard!





ANNO  1825

GULPENER

De Vrije Brouwer